

Building Cohesive Societies

Comparing and Contrasting Social Cohesion Tools and Strategies Across Contexts

September 10-12, 2024

PeaceCon 2024

Washington, DC, USA

Status Quo No More
Building Peace in the Time of
Rising Violent Conflict

#PeaceCon2024 #StatusQuoNoMore



BRIDGET KIMBALL
Technical Advisor for
Social Cohesion & Justice
Integration
Catholic Relief Services



RICARDO MOREL
Director of IPA's Peace &
Recovery Program
Poverty Action



**LINA MARIA
JARAMILLO ROJAS**
Senior Officer for Learning,
Evidence, and Impact
Pact

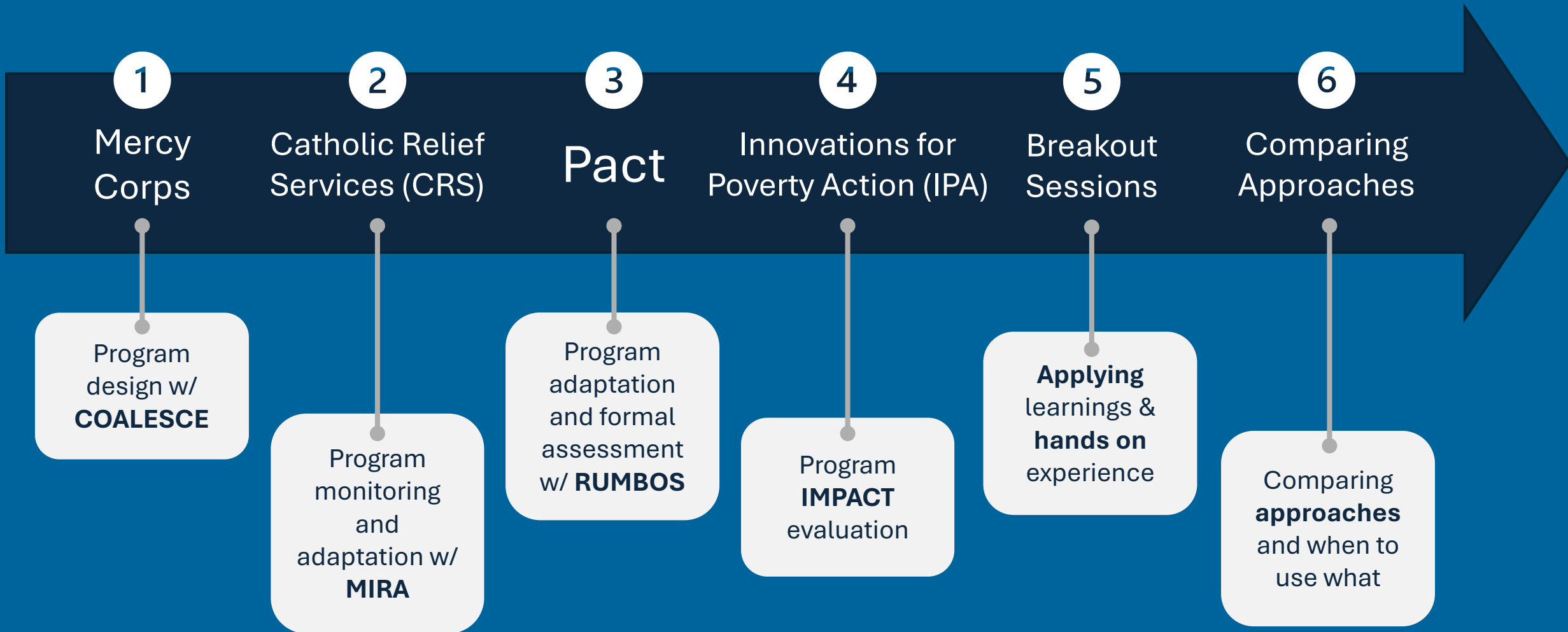


**ALYSSON AKIKO
OAKLEY**
Vice President of Learning,
Evidence, and Impact
Pact

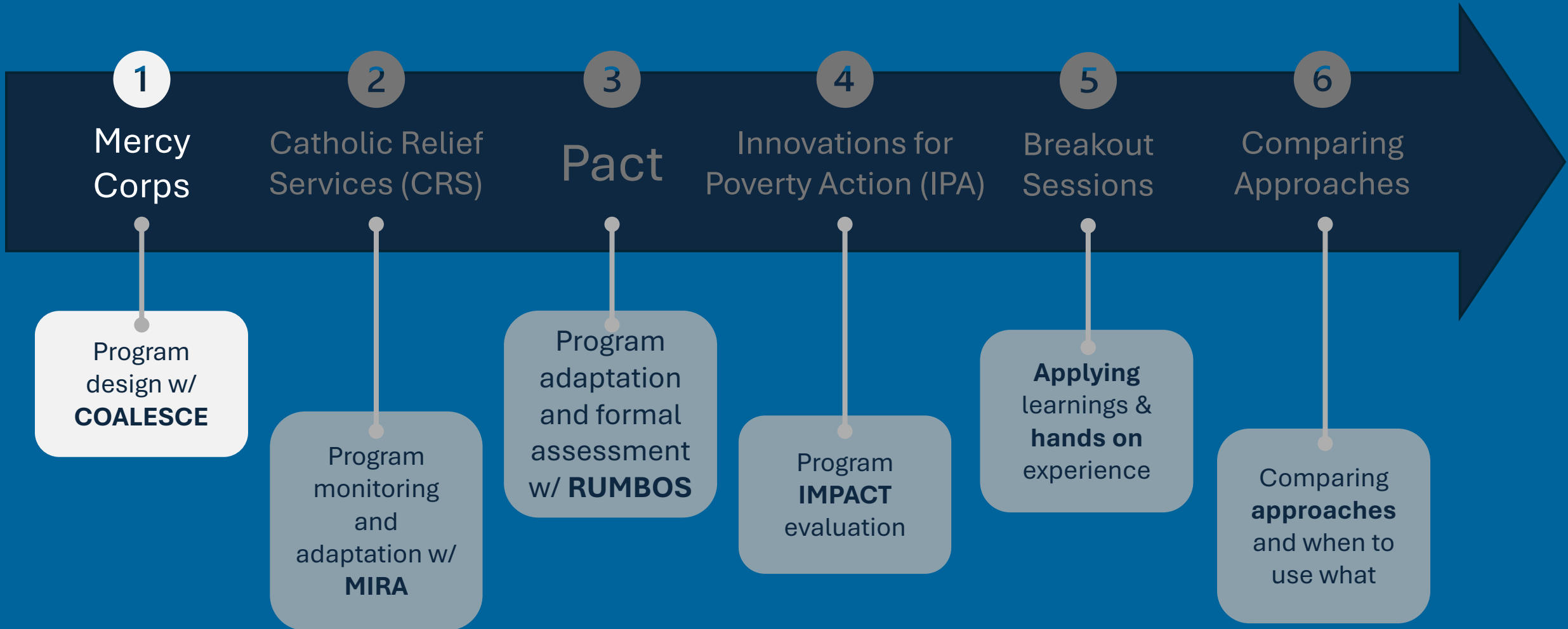


TED HOLMQUIST
Director of Peace & Conflict,
Technical Resources and
Quality Unit
Mercy Corps

Agenda



Agenda



COALESCE

Mercy Corps' Approach to Social Cohesion

Ted Holmquist

Peace & Conflict Director

Technical Resources and Quality Unit



What is Social Cohesion?

"It is the glue that binds society together."

"It is what keeps society integrated."

"People with a shared narrative. "

"Ubuntu-I am because we are."

"It is the foundation for a cooperative and stable society."

"It is what makes individuals into connected community members with shared interests and motivation to work together for a common good. "



TRUST

An individual's

1. Belief that another, individual, group, or institution that could do them harm or betray them will not do so
2. Willingness to take actions that make themselves vulnerable to that actor.

SHARED PURPOSE

BELONGING

The degree to which an individual or collective group feel like they "fit" together in a group

IDENTITY

The characteristics that an individual or collective group believe define them.

ATTITUDES TOWARDS OUT-GROUPS

How individuals perceive people with other values, lifestyles or identities within their group or locality.

Social Cohesion

COLLECTIVE ACTION NORMS

Collectively shared and internalized moral prescriptions that encourage costly actions that primarily benefit others

CIVIC ENGAGEMENT

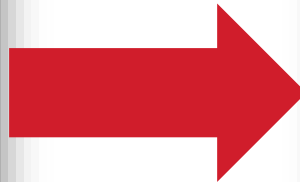
The attitudes and behaviours of individuals that result in participation to improve local area conditions for others and/or help shape the area's future.



Social Capital and Social Cohesion Measurement Toolkit for Community- Driven Development Operations

Developed By: Jeeyon Kim, Ryan Sheely, & Carly Schmidt

FEBRUARY 2020



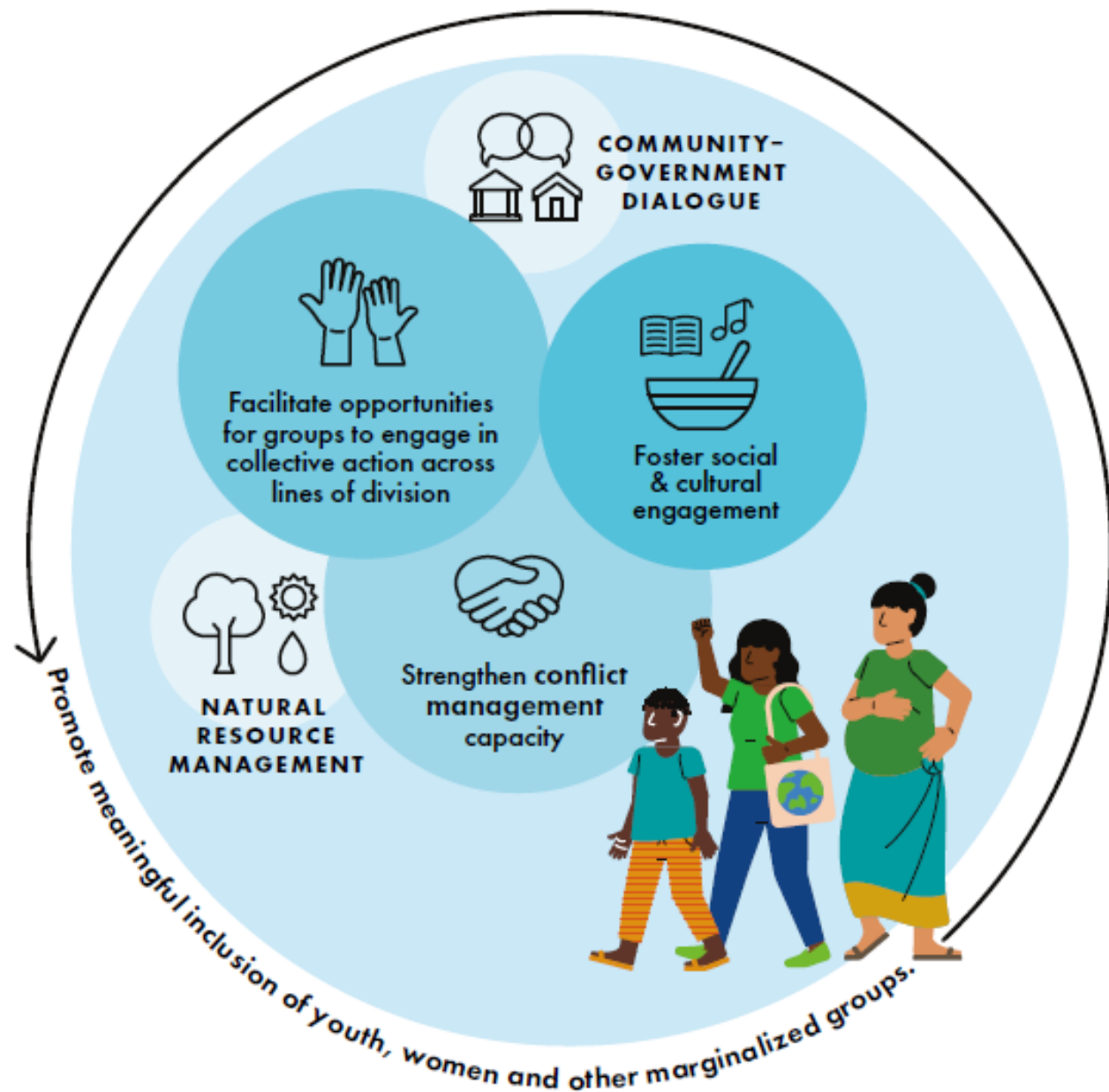
COALESCE: Mercy Corps' Social Cohesion Handbook

MARCH 2024

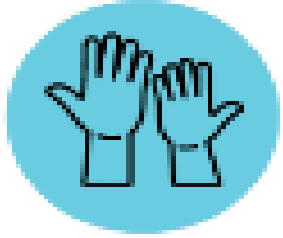




What is COALESCE?

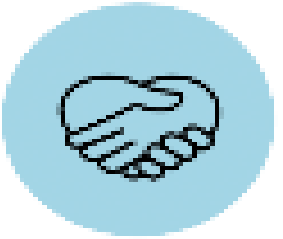


Four Elements in COALESCE



Facilitate Opportunities for Groups to Engage in Collective Action across Conflict Lines

A core element of COALESCE is to provide opportunities for groups to engage across dividing lines in joint community projects. Through this evidence-based approach, different groups can come together to restore trust by working toward a common goal.



Strengthen Peaceful Conflict Management Practice

While conflict management through negotiation & mediation has its own direct impact on reducing violence, Mercy Corps' evidence finds these interventions also strengthen social cohesion by increasing trust, collaboration, and positive attitudes across groups.



Foster Social and Cultural Engagement

While Mercy Corps generally considers social and cultural interactions to have a limited impact as singular interventions, when layered onto other activities, they can increase the volume of positive social interactions and help consolidate gains made by other initiatives.



Facilitate Meaningful Inclusion of Youth, Women, and Other Marginalized Groups

Facilitating the inclusion of marginalized groups is crucial to strengthening social cohesion. Elevating the role of people who have been excluded should be carried out through dedicated activities and integrated across all other approaches as a cross-cutting piece.

Two Key Programmatic Applications



Facilitating joint natural resource management:

Bringing together elements of inter-group collective action and conflict management, this key application supports communities and governance actors to simultaneously address resource-related drivers of conflict while increasing trust and collective action.

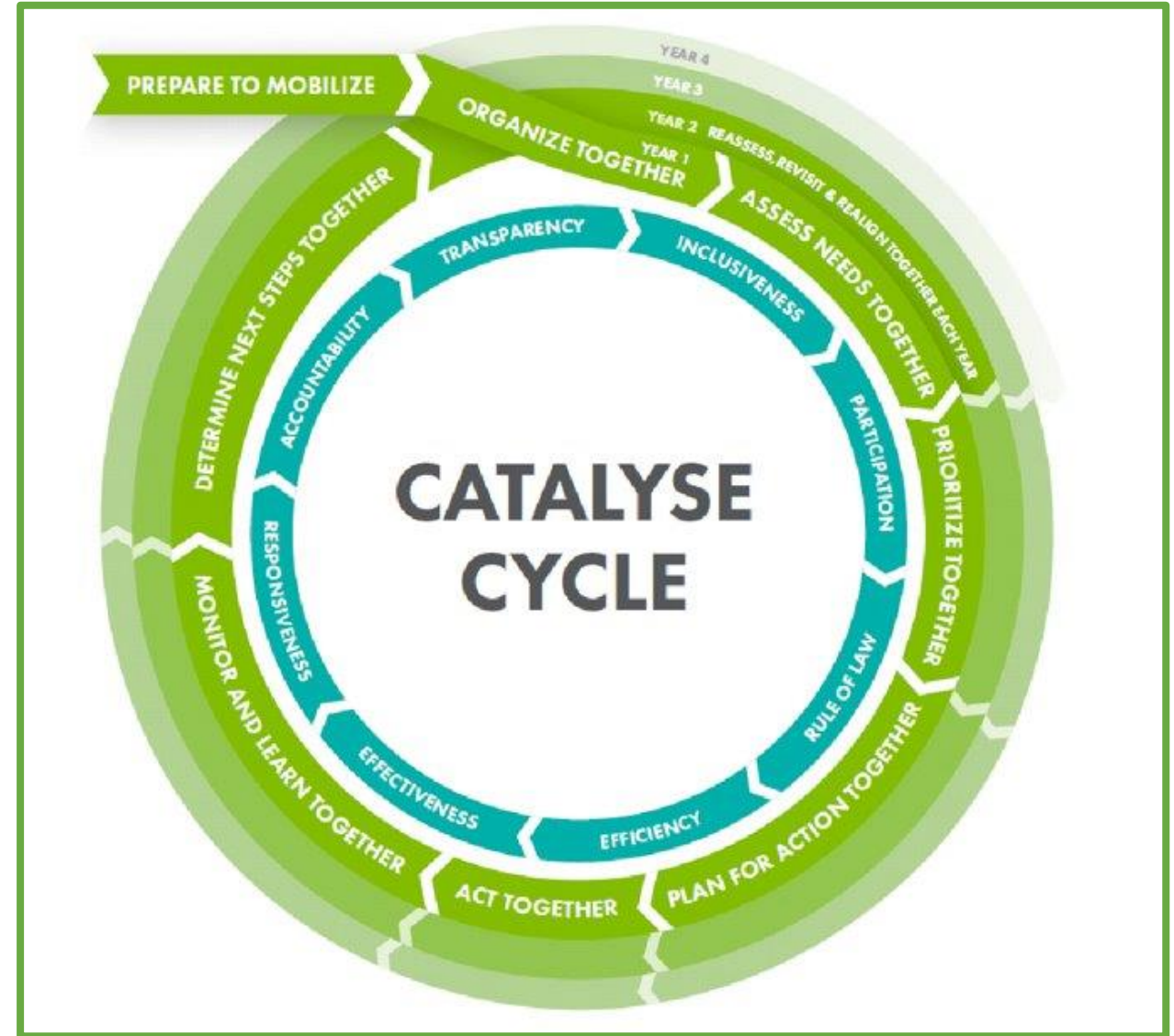


Strengthening dialogue and inclusive planning between communities and governments:

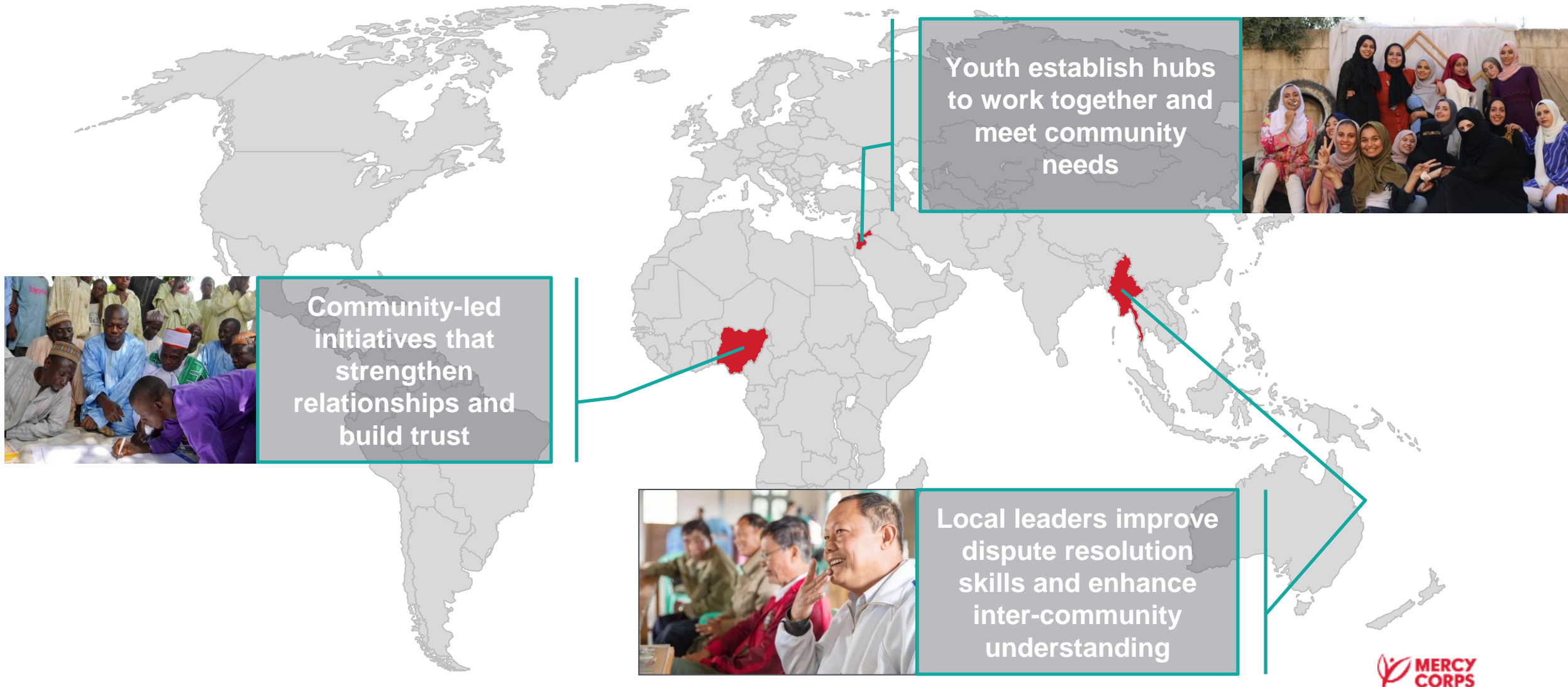
Drawing on the meaningful inclusion approach, this is a common application that engages marginalized people and groups along with key governance stakeholders to address challenges collectively and engage in participatory decision-making and action.

Quick-Start Guide

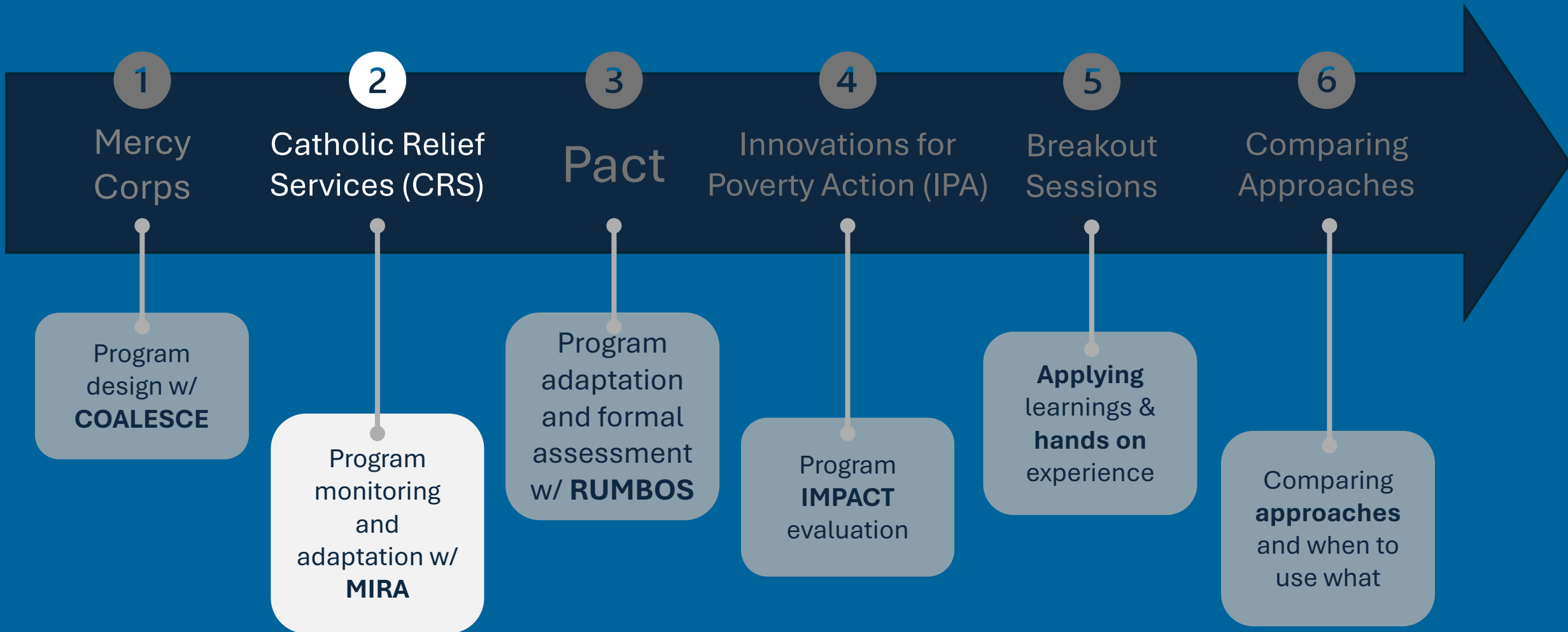
1. Define the Ultimate Goal
2. Conduct an Assessment to Determine Social Cohesion Dynamics
3. Design the Intervention to Address Social Cohesion Dimensions
4. Adapt “CATALYSE” for Social Cohesion to Develop an Inclusive and Participatory Implementation Plan
5. Design and Implement a Measurement Strategy



COALESCE in Practice



Agenda





MIRA and Social Cohesion: Collective Action for Resilience

Integrating a Social Cohesion Perspective to Resilience Context Monitoring

1. How CRS understands social cohesion
2. MIRA tool: Context monitoring for resilience
3. The social cohesion challenge: Collective action for resilience
4. Integrating social cohesion into MIRA
5. *Breakout: Hands-on exploration of MIRA tool*

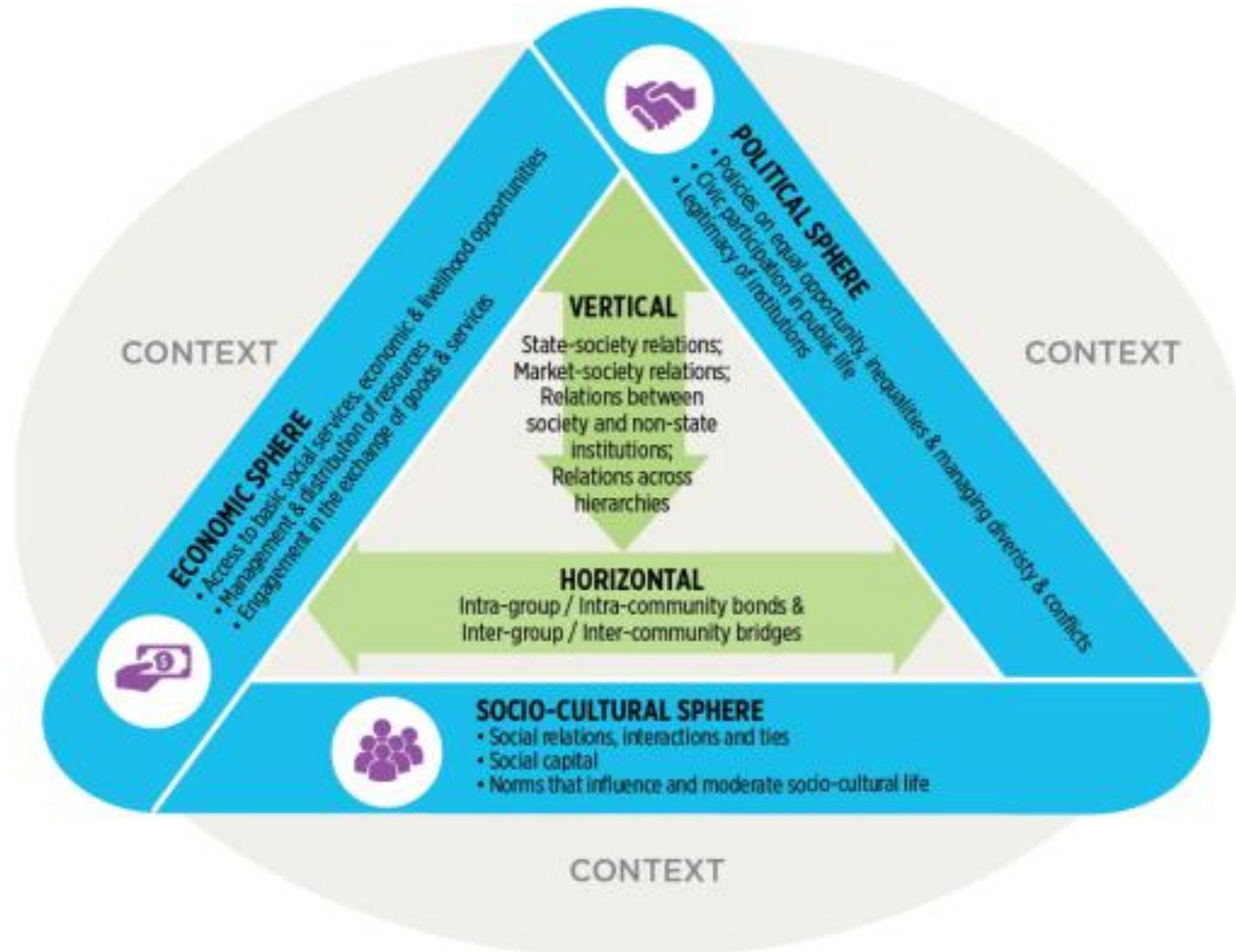
1. Social Cohesion: Definition & Resources



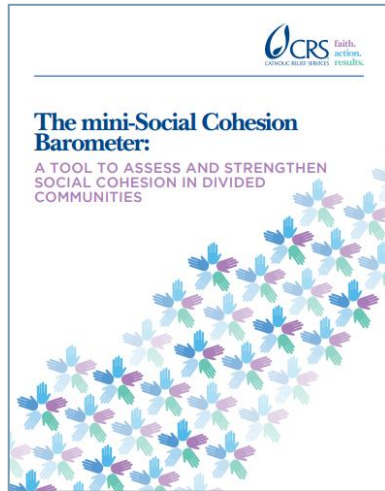
Definition of Social Cohesion

CRS defines social cohesion as the strength, quality and diversity of relationships between and among individuals, groups and communities, coupled with connections between society and the state as well as other institutions and markets. These relationships are based on trust, respect, mutuality and equal opportunity, for the dignity and wellbeing of every person and the common good of all.

Social Cohesion Conceptual Framework

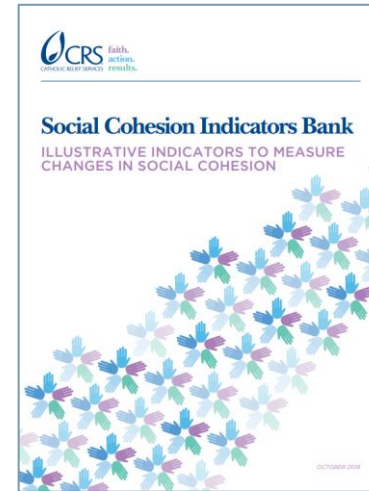


Social Cohesion Technical Resources



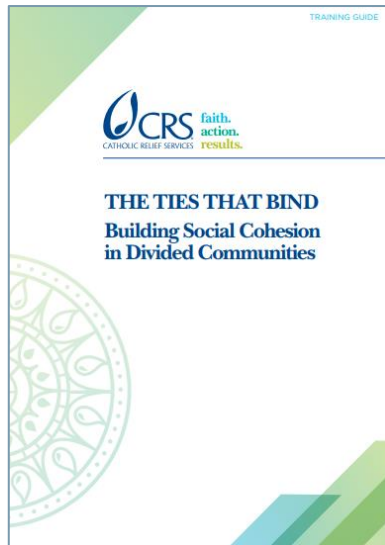
Mini-Social Cohesion Barometer:

Context monitoring tool and for MEAL



Social Cohesion Indicators Bank

and Social and Power Dynamics Assessments: Tools for measuring social cohesion



Social cohesion training manuals:

3B/4D Ties that Bind, Youth Peace Ambassadors, Finding Your Inner Strength



Social cohesion learning briefs and case studies documenting experience and learning

2. MIRA: CRS' Monthly Interval Resilience Analysis Tool

The screenshot displays the MIRA_CAR web application interface within a Microsoft 365 browser window. The top navigation bar includes the Catholic Relief Services logo, the text "Microsoft 365", and a search bar. The left sidebar contains navigation icons for Home, Create, My Content, Feed, Apps, Outlook, Teams, and Power BI. The main content area shows a list of pages on the left and a large image of a group of people in a field on the right. The image has a semi-transparent overlay with a menu of topics in French.

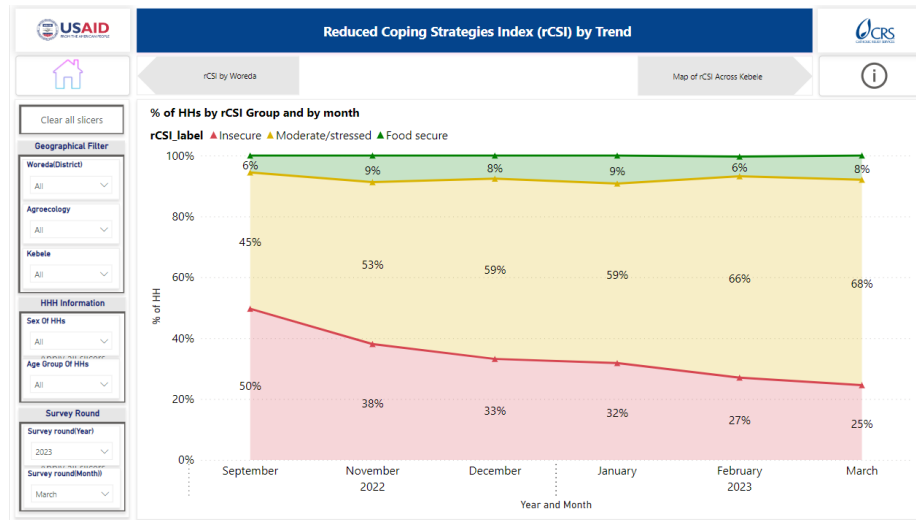
Pages

- DEMOGRAPHIE
- LOGEMENT ET INFRAS...
- DEPLACEMENT
- ASSISTANCE
- MARCHE
- CHOCS LES PLUS IMP...
- 5 CHOCS LES PLUS IM...
- 5 CHOCS LES PLUS IM...
- ECHELLE DE LA FAIM
- HHS PAR SOUS-PREFE...

COMMENT NAVIGUER

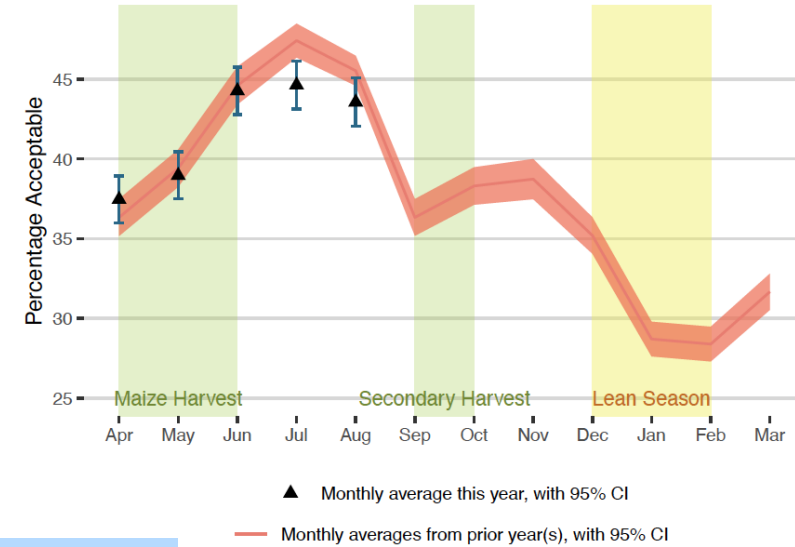
- INTRODUCTION
- DEMOGRAPHIE
- ASSISTANCE
- MARCHE
- CHOCS LES PLUS IMPORTANTS
- ECHELLE DE LA FAIM
- INDICE DE REDUCTION DES STRATEGIES D'ADAPTATION
- SCORE DE CONSOMMATION ALIMENTAIRE
- SCORE DE DIVERSITE ALIMENTAIRE DES MENAGES
- CLASSIFICATION DE LA SECURITE ALIMENTAIRE PAR INDICATEUR ET PAR SOUS-PREFECTURE
- CLASSIFICATION DE LA SECURITE ALIMENTAIRE PAR INDICATEUR ET PAR TYPE DU MENAGE
- PERCEPTION / ATTENTE DES MENAGES CE MOIS-CI ET UN MOIS APRES
- MOYENS DE SUBSISTANCE
- CLIMAT
- INNOVATION ET SECURITE
- COHESION SOCIALE DETAILLEE
- CONFLITS
- COHESION SOCIALE GLOBALE

Monitoring food security trends

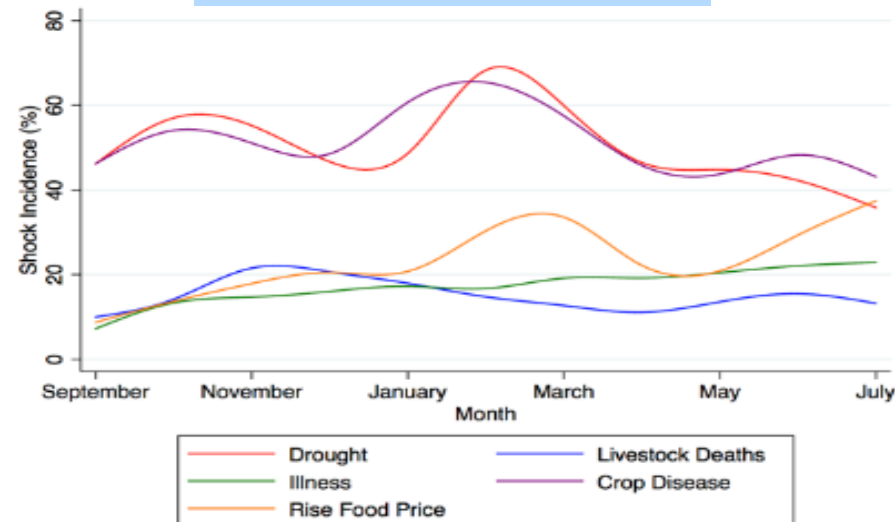


Seasonality

Percentage of Households Acceptable, comparing years
Food Consumption Score (FCS)



Tracking shocks at scale



Countries using MIRA



- **Malawi** – *Rapid Feedback Monitoring System (RFMS)* project (2020-25)
- **Madagascar** – *Firanga / Maharo / Harea* projects (2020-24; 2024+)
- **Ethiopia** – *Ifaa DFSA* (2021-26)
- **Sudan** – *Conflict & Climate Change (Ma'an Aqwa)* project (2022-25)
- **Zimbabwe** – *Restoring Ecosystems and Livelihoods (REAL II)* project (2022+)
- **Central African Republic** (2023+)
- **Democratic Republic of Congo** – *DRC RFSA* (2023-28)
- **Guatemala, Honduras, & El Salvador** – *Pathways to Resilience* project (2024-26)

3.

The Social Cohesion Challenge: Collective Action for Resilience



Social Cohesion for Collective Action

Example of problem: Community lacks access to water.

- Water points are constructed but community maintenance is inconsistent, thus community members still lack access.

Social cohesion data may show challenge in, for example:

- Lack of trust in neighbors (***social divisions – intergroup***)
- Not seeing value in collective action (maybe dysfunctional water committee or ***infighting – intragroup***), or
- People's lack of ***trust in their leaders*** (*vertical cohesion concerns*)

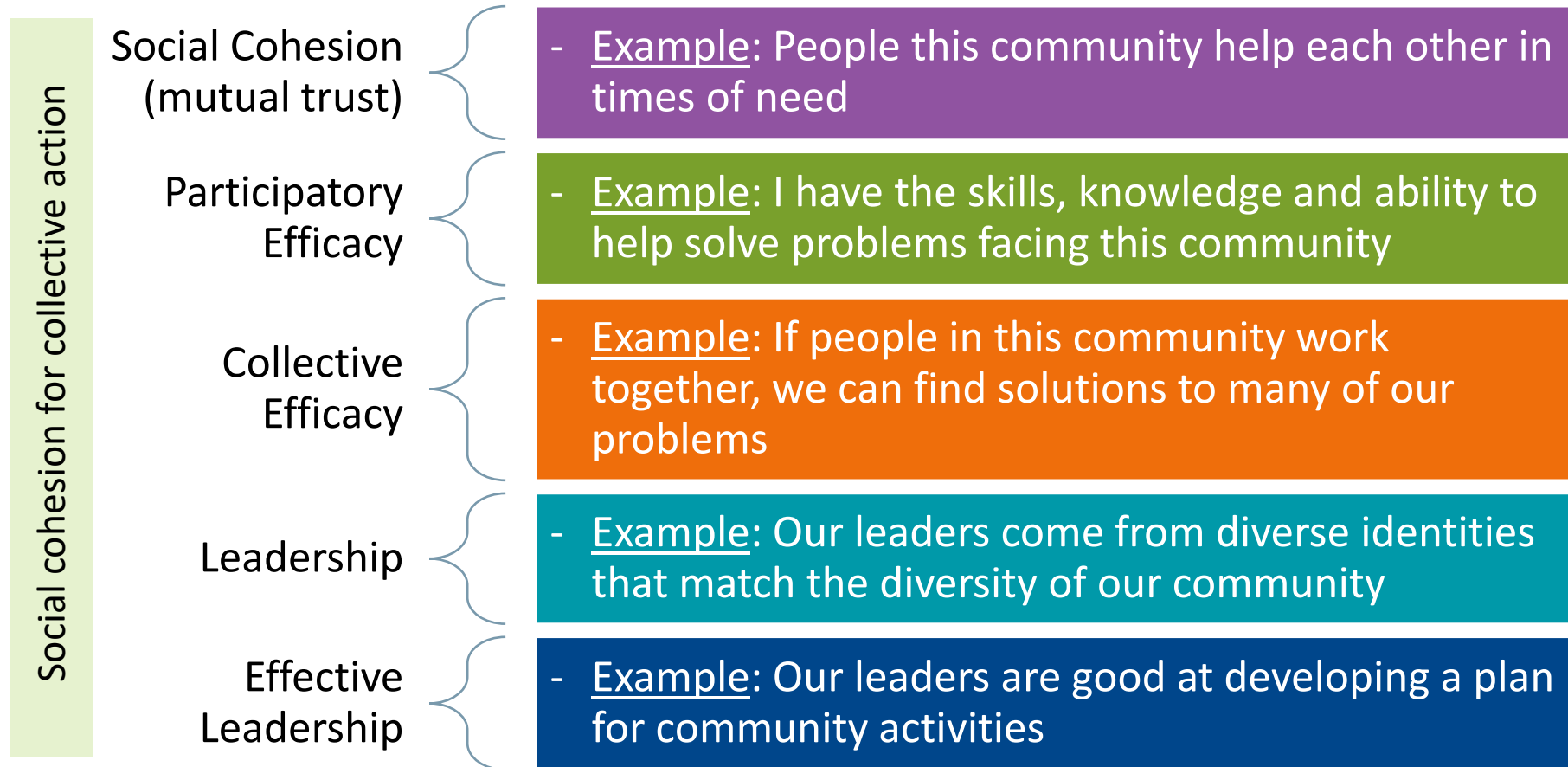
4.

Developing a Social Cohesion Module for MIRA



MIRA Social Cohesion Module

Community Capacity Scale - Five domains



MIRA Social Cohesion Questionnaire

“As members of this community, we are able to tackle the most difficult situations because we are all committed to the same collective goals.”

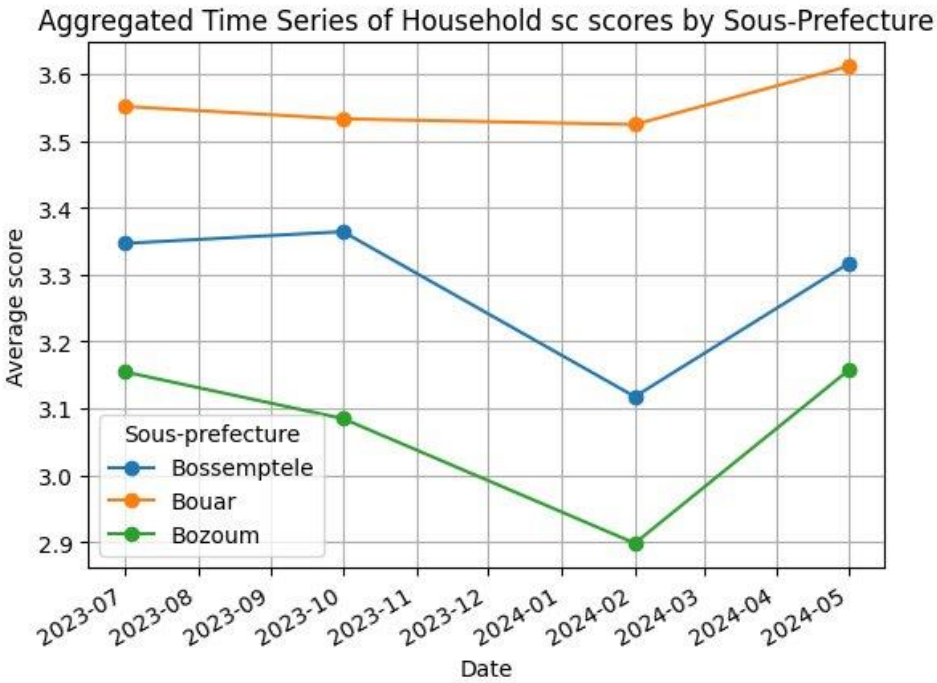
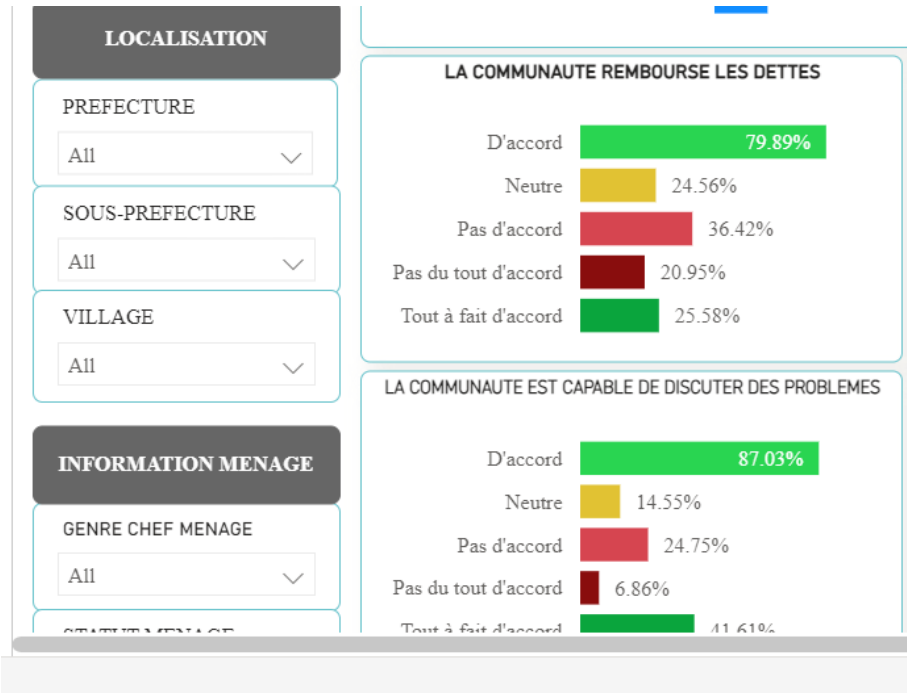
111	<p>[COLLECTIVE EFFICACY]</p> <p>a. Whenever our community undertakes a project together, we know that we will all work hard until it is accomplished.</p> <p>b. Whenever a community problem arises, I am very confident that community members will be able to solve it.</p> <p>c. As members of this community, we are able to tackle the most difficult situations because we are all committed to the same collective goals.</p> <p>d. If people in this community work together, we can find solutions to many of our problems.</p>	<p>Strongly Disagree Disagree Neutral Agree Strongly Agree</p> <p>a. 1.....2.....3.....4.....5</p> <p>b. 1.....2.....3.....4.....5</p> <p>c. 1.....2.....3.....4.....5</p> <p>d. 1.....2.....3.....4.....5</p> <p>e. 1.....2.....3.....4.....5</p>
-----	--	--

Responses are scored on a 5-point Likert scale.

MIRA CAR: Social Cohesion Module

- Data is collected quarterly
- 1,079 households in two prefectures of the Central African Republic
- 4 cycles of data collection thus far. Most recent was in May 2024

MIRA: Social Cohesion Module

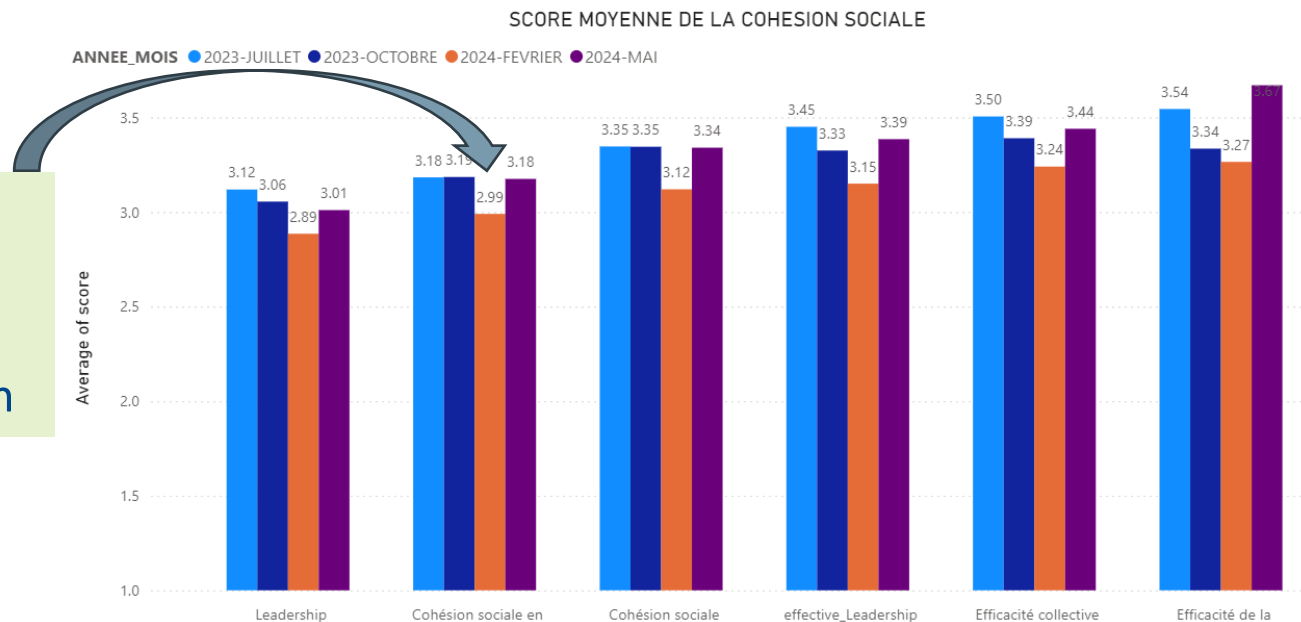


Data Interpretation

- Triangulate with current events
- Community collaboration is essential
- Study relative values and trends in scores

February data collection:

- Increase in prices
- Hunger season
- Transhumance season

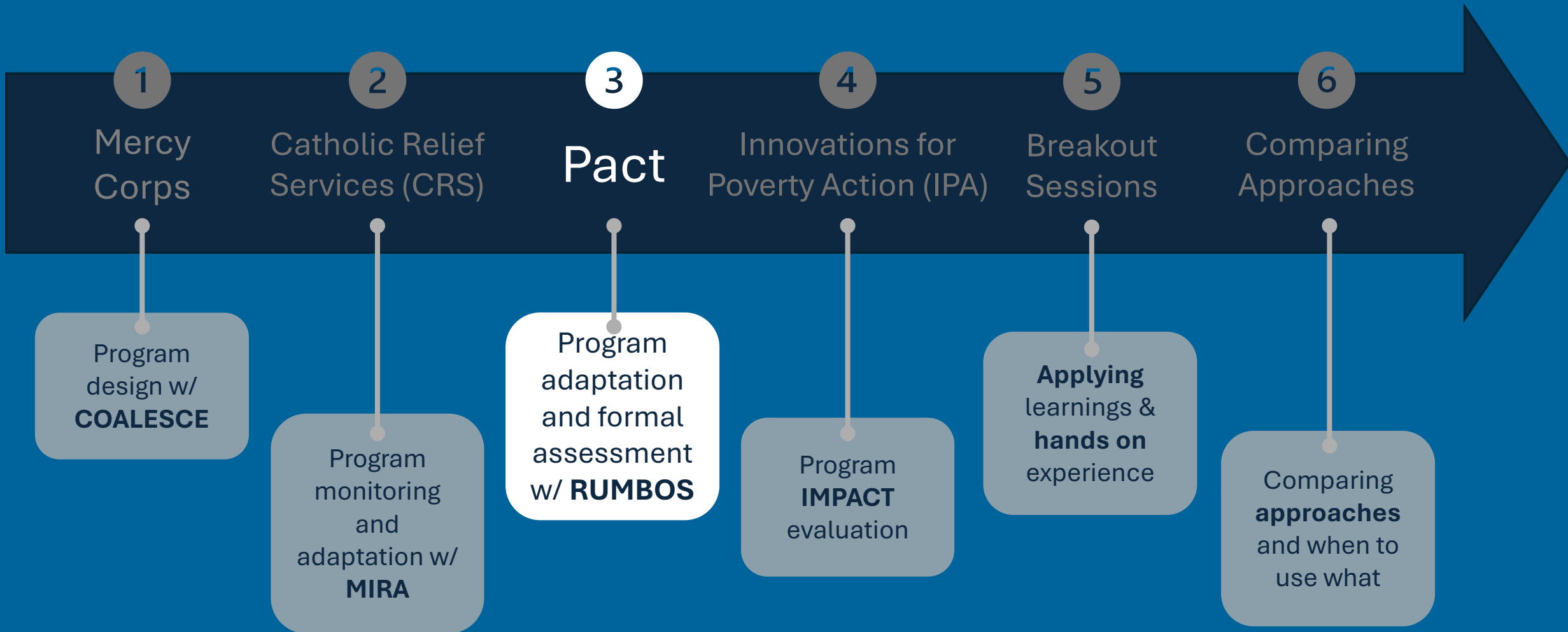


Key Takeaways

- **Social cohesion in resilience**: Social cohesion helps equip communities to mobilize and work together through collective action to respond to shocks and stressors.
- **Social cohesion in resilience monitoring**: Tracking social dynamics in the context of resilience helps to: (1) bring visibility to evolving trends in social dynamics (2) surface social impacts in the aftermath of a shock, and (3) facilitate programmatic decision-making.
- **Data interpretation**: Social cohesion scores take on meaning especially through (1) triangulation with current events and community collaboration and (2) trends over time, considering relative rather than absolute scores.



Agenda





The “RUMBOS” (Pathways) Index

Conceptualizing and Operationalizing Social Cohesion in a Colombian Migratory Context

Lina Maria Jaramillo Rojas

Senior Officer, Learning, Evidence and Impact (LEAP), **Pact**



1. The challenge of building social cohesion in a migratory context







2. Re- conceptualizing social cohesion to address a migrant crisis



Pact's Social Cohesion Framework

Pact's social cohesion framework considers what needs to be present to promote a **sustained environment** of community **cohesion** and social **integration**.



- **Citizen security** beyond a traditional focus on physical security, criminality, and policing.
- Citizen security from a **human rights** perspective.
- Includes **CSO network capacities, trust, collective action, and access to information.**

3. Operationalizing social cohesion through a participatory index



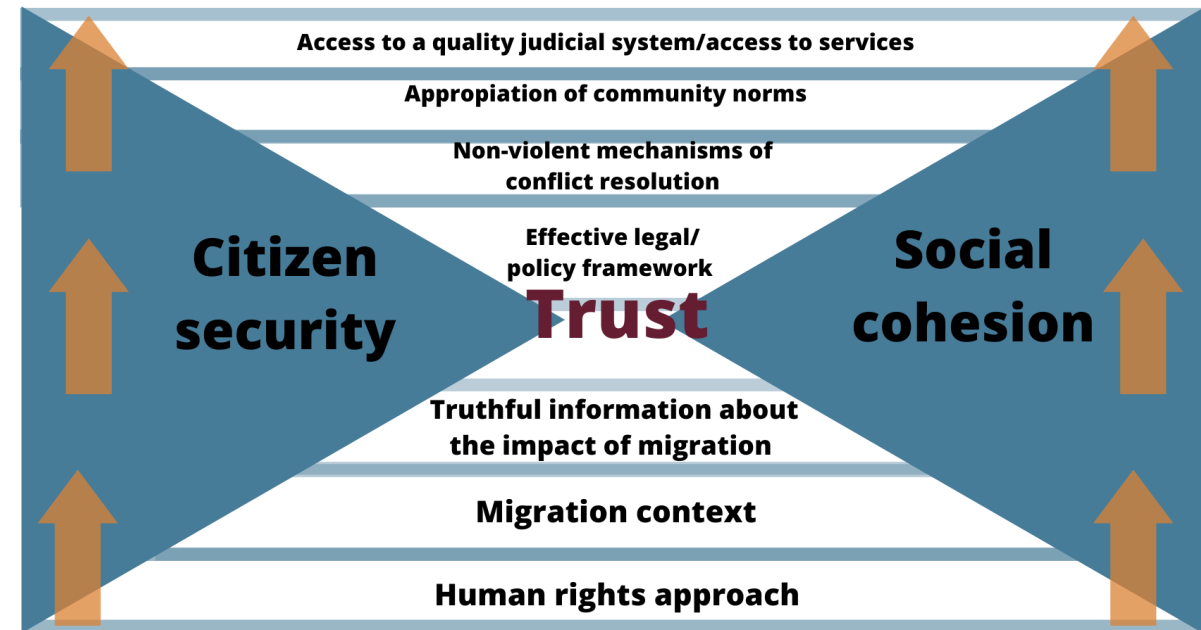
The Challenge

We needed a tool to...

- Inform project **strategy**
- Enable **adaptive** management
- **Measure** change over time

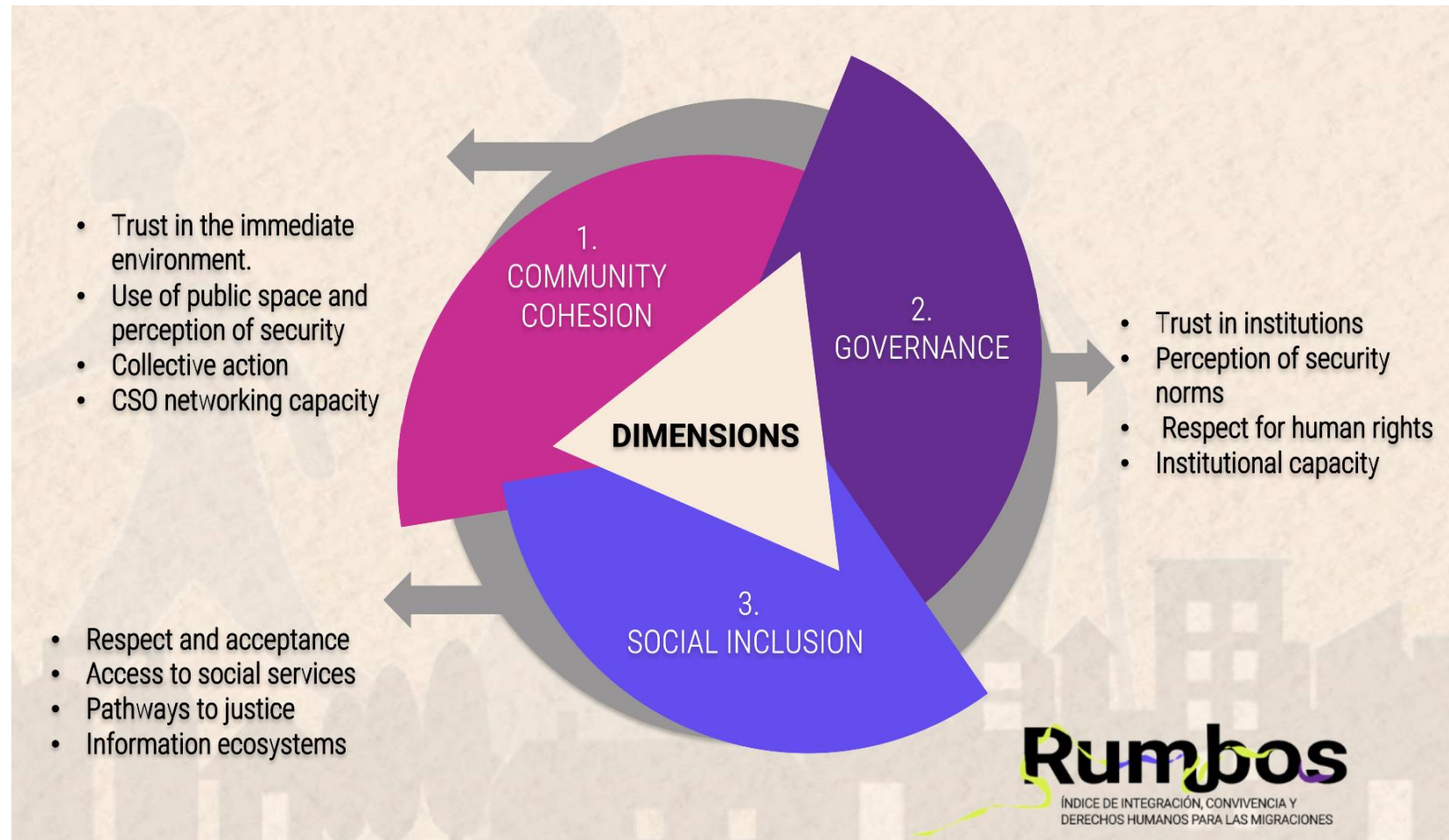
The tool also needed to...

- Measure **subnational and national** units
- Work with existing **monitoring** data
- Be understandable to **technical** teams
- **Empower** and enable stakeholders

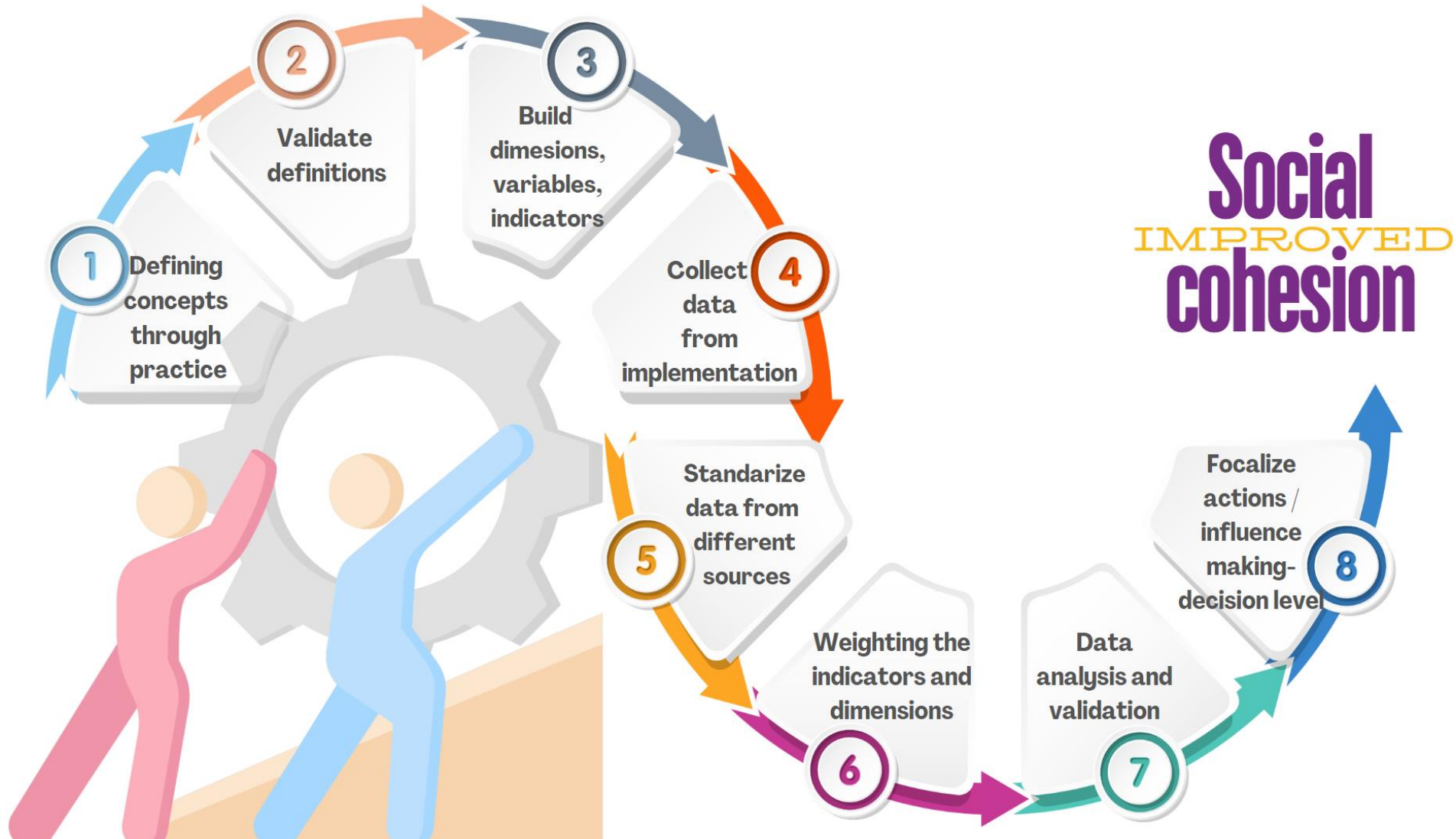


What We Developed: RUMBOS (“Pathway”)

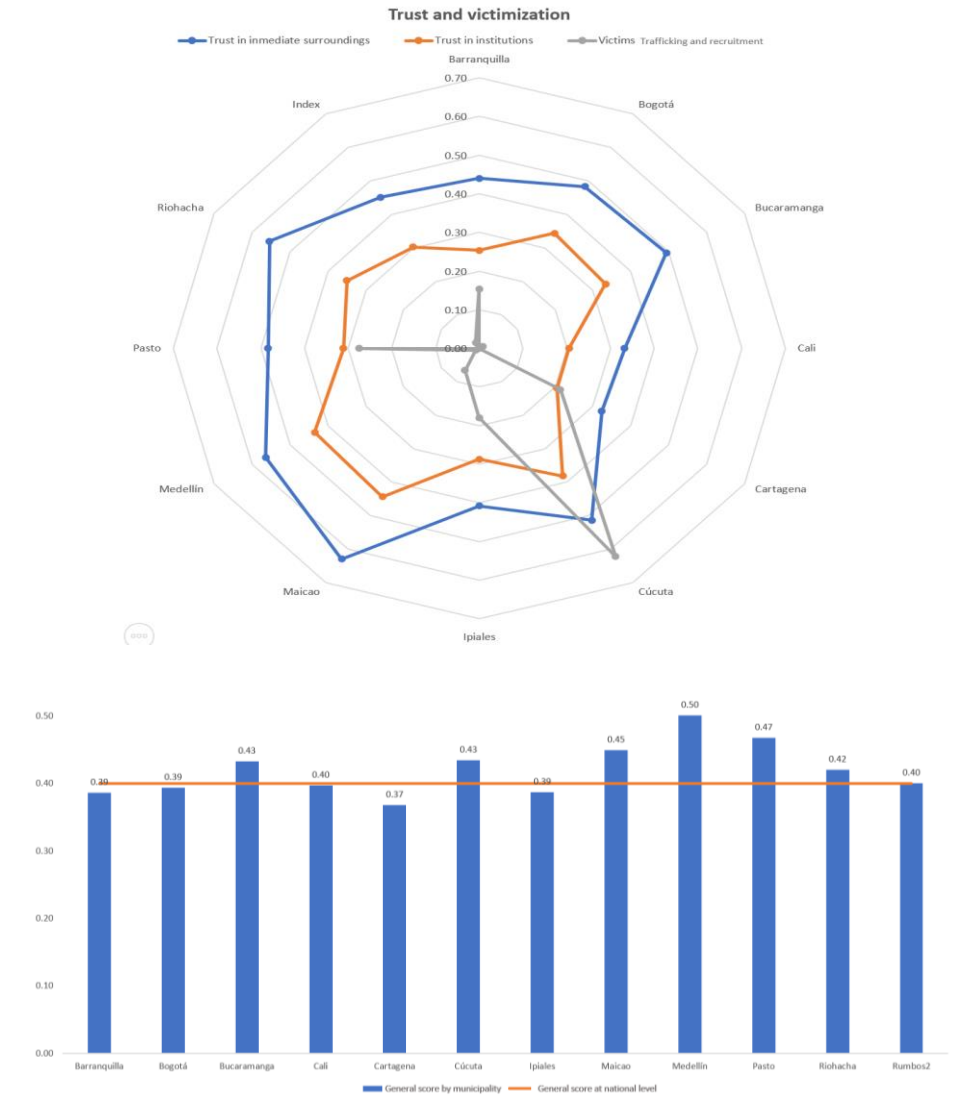
RUMBOS is a **participatory index** that evaluates the relationship between concepts associated with the improvement of **social cohesion** and **citizen security** from a **human rights** perspective.



Developing RUMBOS



Data Sources and Instruments



- **Surveys** fielded to public officials and local government entities.
- **Baseline** completed in host and recipient communities.
- **Information ecosystem** assessment applied to communities.
- **Human rights violations** diagnosed, and risk factors mapped.
- **Interviews** and **focus groups** completed with key actors.

4. Using the Rumbos Index



In the migration context, it was key to embed social cohesion under a human rights approach, which gave citizen security and social cohesion a totally new perspective.



Rumbos Findings and Applications

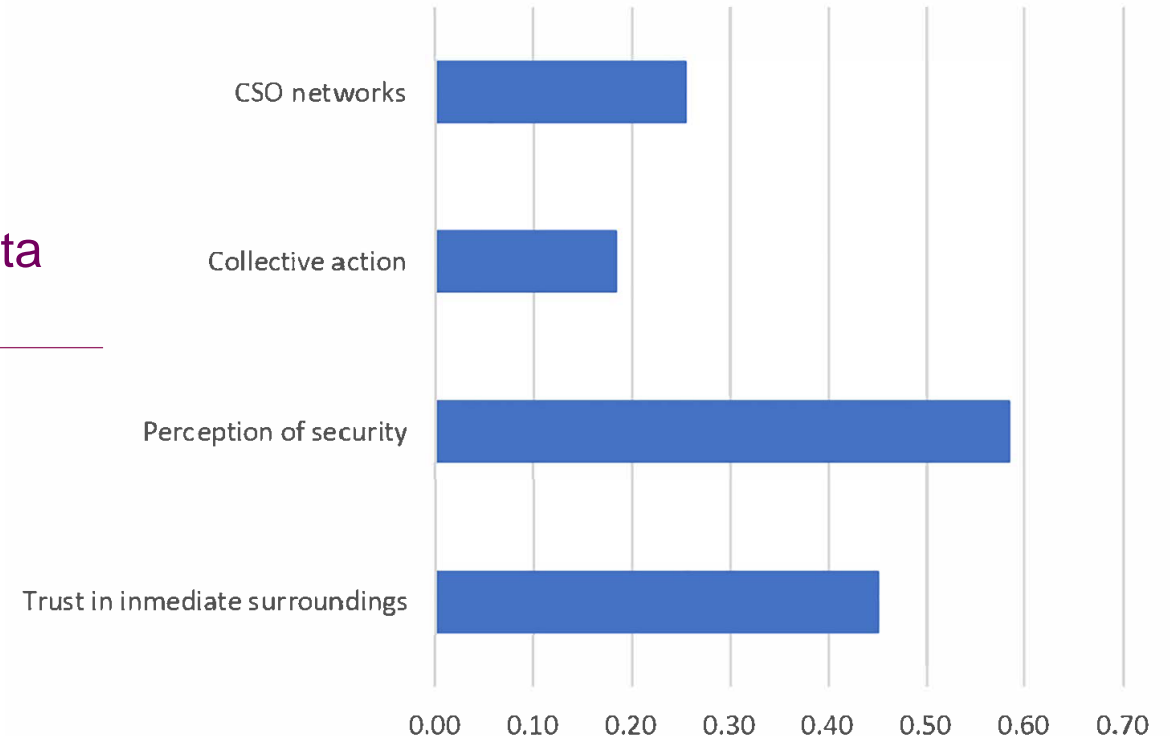
FINDINGS

- Social cohesion increased from 51% to 66% across 11 municipalities.
- There was strengthened trust between institutions and communities in solving issues.
- Increased human rights awareness led to more community integration (e.g., gender protection networks).
- Improved national government capacity to use data for migration policy and decision-making.

APPLICATION

- Prevention, protection, and response to human rights violations as part of social inclusion.
- Legal assistance for status regularization to promote social cohesion.
- Behavioral studies to reduce xenophobia.
- Technical alliance with the Colombian government to improve data integration into the national index.

Social cohesion by sub-domain



Índice



Rumbos

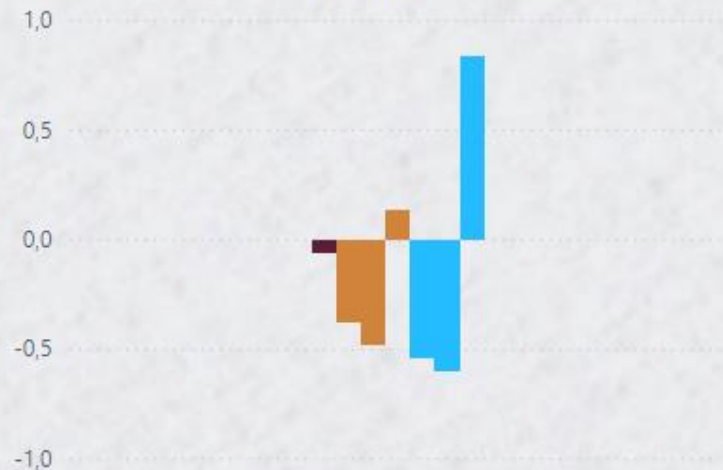
Según los análisis internos del índice:

La confianza es el principal dinamizador de la cohesión comunitaria.

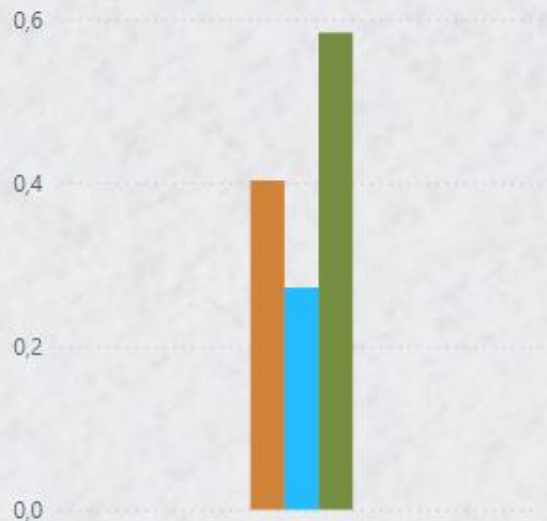
Las OSC son un puente para la confianza con la institucionalidad

La vulneración de derechos es una variable muy independiente de las demás en el índice, pero tiene relación la xenofobia

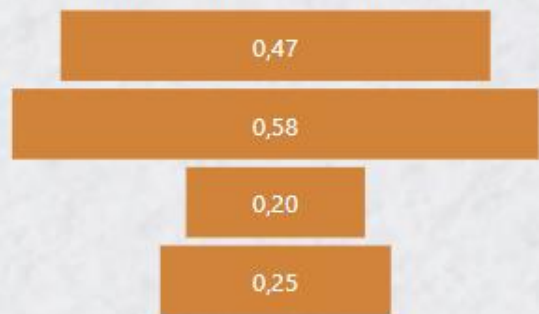
Brechas



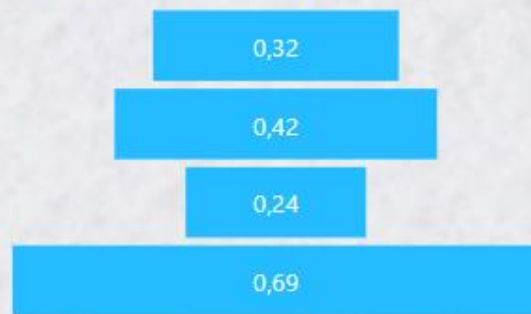
Dimensiones



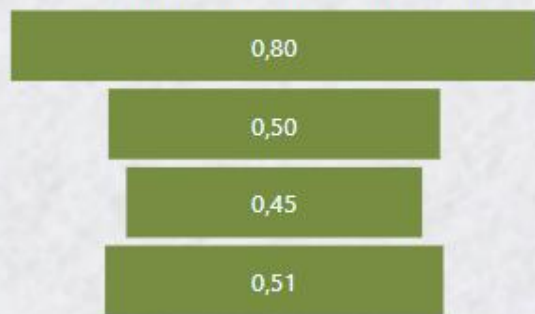
Subdimensiones Cohesión Social



Subdimensión Gobernanza



Subdimensiones Inclusión Social



Rumbos
ÍNDICE DE INTEGRACIÓN, CONVIVENCIA Y
DERECHOS HUMANOS PARA LAS MIGRACIONES

5. Looking ahead



Main Takeaways

- 1. Engage communities in measurement approaches.**
Social cohesion must be understood from the perspective of local communities.
- 2. Embrace complexity.**
Measurement methods can adapt to the needs of the project.
- 3. Take a gender perspective.**
Essential to measure social cohesion inclusiveness component.

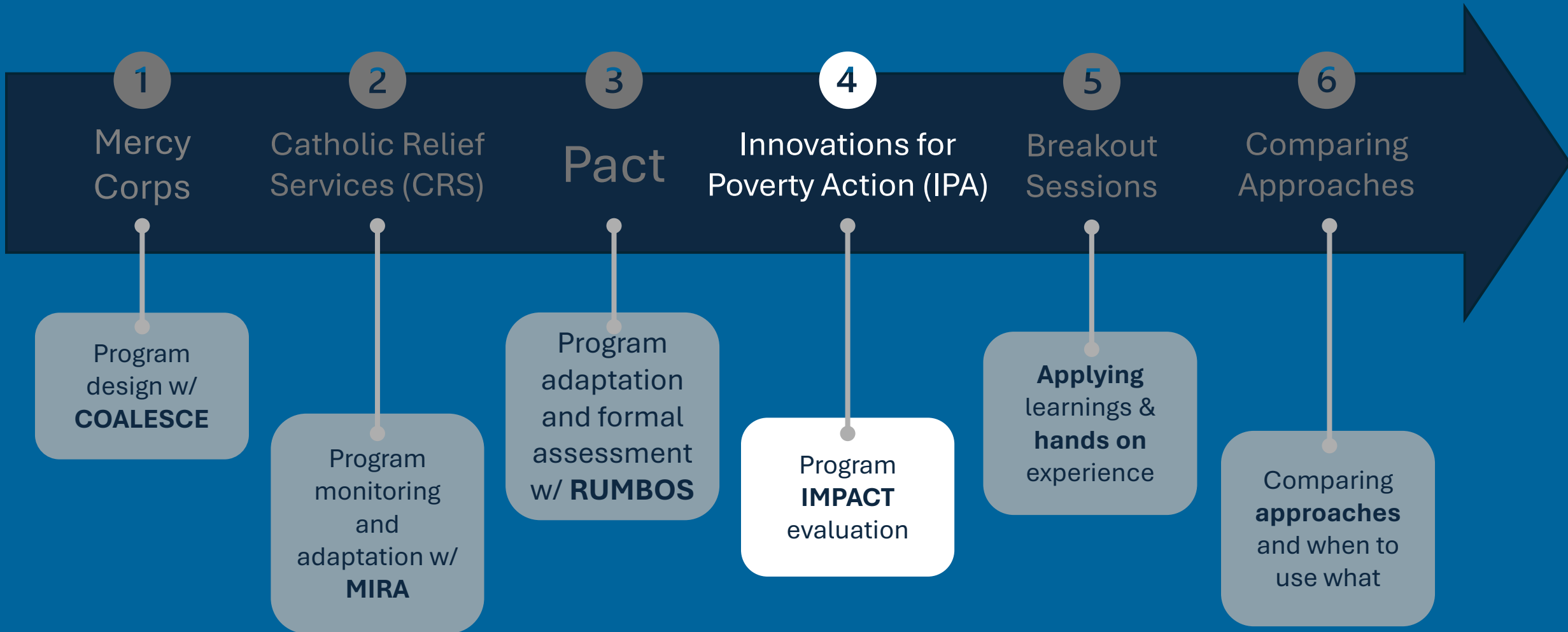


Community integration activity-Cibercaminantes



Co-creation processes to discuss and identify the risks faced by migrants

Agenda



Impact Evaluations Measuring Social Cohesion

Why, What, & How

.....

Ricardo Morel, Peace & Recovery Program Director
10 September - PeaceCon 2024

Defining social cohesion

“...a sense of shared purpose, trust and willingness to cooperate among members of a given group, between members of different groups, and between people and the state.”

[Chatterjee, Gassier, & Myint, 2023](#)

Why evaluate social cohesion programs?

To assess effectiveness and unpack mechanisms

- Understand what drives that impact
- Assess program cost-effectiveness
- Test fundamental theories of behaviour and attitude change

To produce generalizable learning

- Identify and test underlying mechanisms driving outcomes
- Assess if these mechanisms are likely to apply in different settings

Building social cohesion across divides can

- Prevent violence
- Promote prosocial norms
- Address conflict
- Foster inclusive societies

Yet, rigorous research on social cohesion programs in fragile settings is limited.

Challenges

Limited measurement of **social cohesion** through **impact evaluations** until recently

- **Conflict-affected contexts:** insecurity, instability, population mobility
- **Short implementation** timelines and lack of research infrastructure
- Reliance on **self-reported answers**

However, this is beginning to change...



Photo Credit: Glenna Gordon - Sierra Leone, 2011

Impact Measurement: What

Outcomes	Indicators	Dimensions	Programs
<ul style="list-style-type: none">● Trust● Belonging● Willingness to participate● Willingness to help● Acceptance of diversity	<ul style="list-style-type: none">● Attitudinal: subjective perceptions and beliefs● Behavioral: actual or intended actions or reactions	<ul style="list-style-type: none">● Horizontal: ties between individuals & groups● Vertical: individual trust in government and institutional processes	<ul style="list-style-type: none">● Intergroup contact● Intergroup dialogue● Perspective-taking● Peace education● Media-based interventions● Reconciliation

[Sonnenfeld et al., 2021](#)

[IPA & J-PAL, 2021](#)

Impact Measurement: How

Data sources include:

- **Administrative:** gov data, hh surveys
- **Survey:** self-reported attitudes and behaviors, donation measures
- **Observational:** behavioural games, real-world behaviours
- **Qualitative:** focus groups, open-ended interviews

Important for survey data & questions to be:

- **Comparable**
- **Context-adapted** through piloting
- **Right tools**



Snapshot: IPA-supported Impact Evaluations

Study Title	Data	Indicator	Trust	Belonging	Acceptance	Willingness to	
						Participate	Help
Intergroup Contact Interventions							
Interreligious soccer team, post-ISIS Iraq	s	A, aiB					
Empathy education & refugee-native integration, Lebanon	s, o	A, aiB					
Intergroup Dialogue Interventions							
Farmer-Herder contact and dialogue, Nigeria	s	A, iB					
Mediation and community dialogues, Nigeria	s	A, iB					
Perspective Taking Interventions							
Classroom empathy curriculum for refugee integration, Turkey	s, o, a	A, aiB					
Perspective-taking to reduce prejudice towards refugees, Uganda	s, q	A, iB					
Reconciliation Interventions							
Pro-peace radio message: militant returnee acceptance, Nigeria	s	A, iB					
Training & traditional bonfire ceremony, Sierra Leone	s	A, iB					

s = Survey data; o = Observational data; q = Qualitative data; a = Administrative data

A = Attitudinal; iB = Intended Behavior; aiB = Intended and Actual Behavior

RCT: Reconciliation in Sierra Leone

Question

Can reconciliation programming restore social cohesion after civil war?

Intervention

Community-level reconciliation forums in Sierra Leone (bonfire ceremonies)

Peace trees

Measures

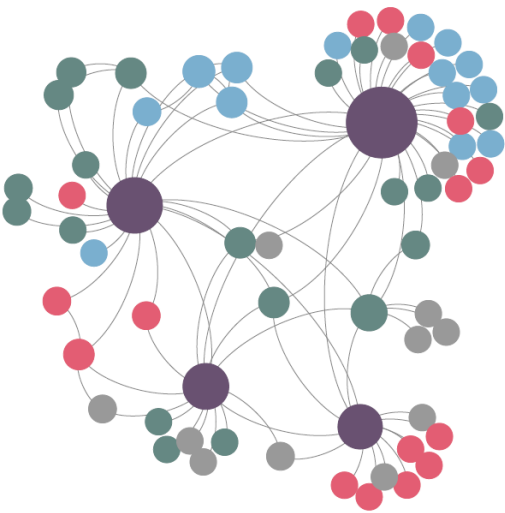
- **Trust:** Attitudes towards forgiveness (individual)
- **Willingness to participate:** Community participation
- **Willingness to help:** Public good contributions

Social networks

...measured through **surveys**



Peace measurement: Social cohesion



Variables

Index of participation in community groups
Index of participation in community groups, without women's membership or meetings
Indicators
PTA membership
Village development committee membership
Youth group membership
Women's group membership
Secret society membership
Religious group membership
PTA meeting attendance
Village development committee meeting attendance
Youth group meeting attendance
Women's group meeting attendance
Secret society meeting attendance
Religious group meeting attendance
Community meeting attendance

Table 2. Reconciliation and social networks. Each row represents a separate assignment. All specifications are cross-sectional because we do not have baseline section pair fixed effects and the second round indicator. SEs are clustered at the level, and * is significant at the 10% level. The control mean is the mean in the co

Variables

Index of network strength
Indicators
Number of people respondent would approach for advice / help
Number of people respondent would ask to collect money for them
Number of times respondent listed as good friend
Number of times respondent listed as someone to ask for advice / help

Results:

Reconciliation in Sierra Leone

The program:

- Increased **forgiveness** and **trust** towards perpetrators
- Strengthened **social capital**

However, the program also:

- **Worsened psychological well-being** (PTSD, depression, anxiety)

Effects persisted for 3 years



RCT: Intergroup Contact in Iraq

Question

Can intergroup contact create trust after conflict?

Intervention

A soccer league in Iraq, where players are randomly assigned to all-Christian or mixed Christian-Muslim teams

Measures

- **Attitudes & behaviours** towards the out-group
- ... measured through **surveys** and real world **behavioural measures**



Peace Measurement: Social Cohesion

On-the-field outcomes:

- Train with Muslims
- Vote for Muslim to get sportsmanship prize
- Sign up for mixed team next season

Off-the-field outcomes:

- Attend mixed social event
- Patronizing a business in Muslim neighborhood
- Donating to an NGO vs Church

Behavioral Outcomes

1. Attend mixed dinner event (five months post-intervention; three weeks for pilot)
2. Train with Muslims at least once a week (six months post-intervention)
3. Patronize restaurant in Mosul (one to four months post-intervention)
4. Donate \$ survey compensation to Church vs. neutral NGO (two weeks to five months post-intervention)
5. Vote for Muslim player to receive sportsmanship prize (two weeks to five months post-intervention)
6. Register for mixed team in the future (two weeks to five months post-intervention)

Attitudinal Indices

1. Coexistence
 - 1.1 Believe that Iraq would be a better society if Iraqis treated each other as Iraqis first
 - 1.2 Believe that dividing Iraq into ethnic and religious groups is arbitrary
 - 1.3 Believe that life these days is unpredictable and dangerous
2. Intergroup Attitudes
 - 2.1 Sharing at least “a little” in common with Muslims
 - 2.2 Proud or very proud to be Iraqi
 - 2.3 Comfortable going to noncoethnic areas
 - 2.4 Some or most of friends are non-Christians
 - 2.5 Reject claim that most Sunni Arabs approve of ISIS
3. Muslims as Neighbors
 - 3.1 Comfortable with Shi’ite Shabak as Neighbor
 - 3.2 Comfortable with Sunni Arab as Neighbor
 - 3.3 Comfortable with Sunni Shabak as Neighbor
 - 3.4 Willing to sell land to non-Christians
4. Blaming Muslims
 - 4.1 Believe that Shi’ite Shabak are responsible for Christian suffering
 - 4.2 Believe that Sunni Arabs are responsible for Christian suffering

Results:

Intergroup Contact in Iraq

- Increased **tolerance on the field**.
More likely to:
 - Train with Muslims 6 months later
 - Vote for a Muslim player (not on their team) to receive a sportsmanship award
- Personal beliefs proved harder to modify (**null effects off the field**)
 - Stereotypes persist
 - Empathy didn't increase



Notable Design Considerations

When designing measurement, consider the following:

- **Behavioral Change:** Behaviours may be easier to shift than attitudes, at least in the short term
- **Potential Adverse Effects:** Post-conflict programs and research can have negative impacts (worsening psychological wounds), these need to be designed carefully
- **Differential Impacts:** Interventions may affect different groups in varying ways
- **Study Duration:** The length of the study can influence the detection of program effects



Thank you!

peace@poverty-action.org



Additional Resources: Survey Tool Design

- [Social integration roster of questions](#) from the IPL 12 (shorter version) / 24 (longer version)
- [Prejudice Reduction Evidence Database](#)
- [UNHCR Data and Analysis](#) on standardized education and employment modules
- [UNHCR Forced Displacement Survey](#)
- [EGRISS recommendations](#)
- [JIPS Durable Solutions Indicators and Guide](#)
- [IPA Remote Surveying in a Pandemic](#)

Additional Resources: Snapshot of Open Research Areas

Key actors and factors

- Role of **civil society** organizations and **grassroots movements**
- Role of **media**
- Role of **social networks**, **education** programs, and **community-based** initiatives

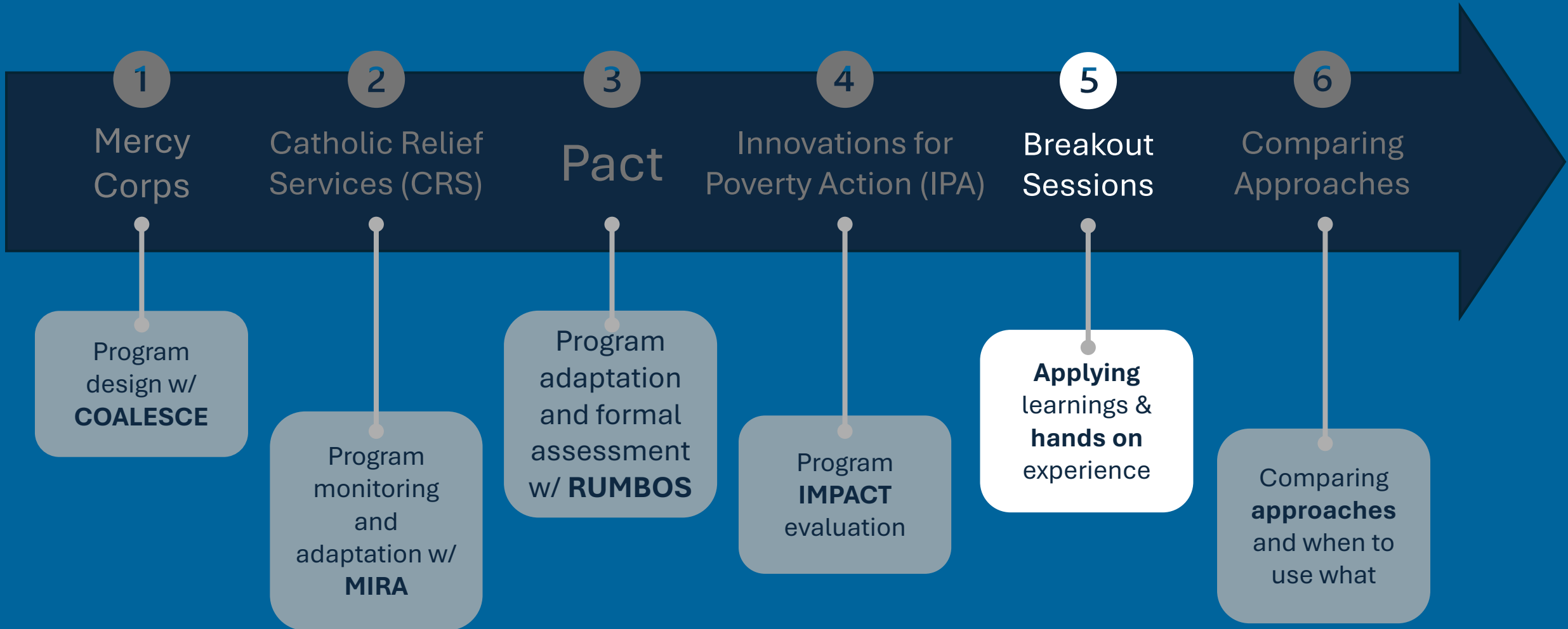
Mechanisms

- Trigger **mechanisms**
- **Effects over time**: short, medium, and long-term

Programming

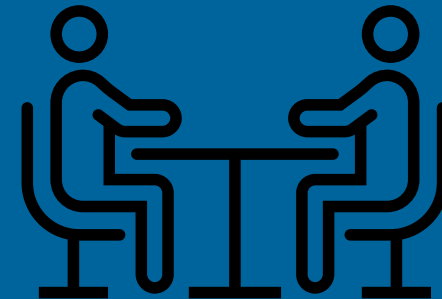
- Types of **institutional or group-based** interventions
- Types of **intergroup contact** interventions
- Design to **improve attitudes**, in addition to behaviors, and create **spillovers**
- **Development programs and policies**

Agenda



Breakout Sessions

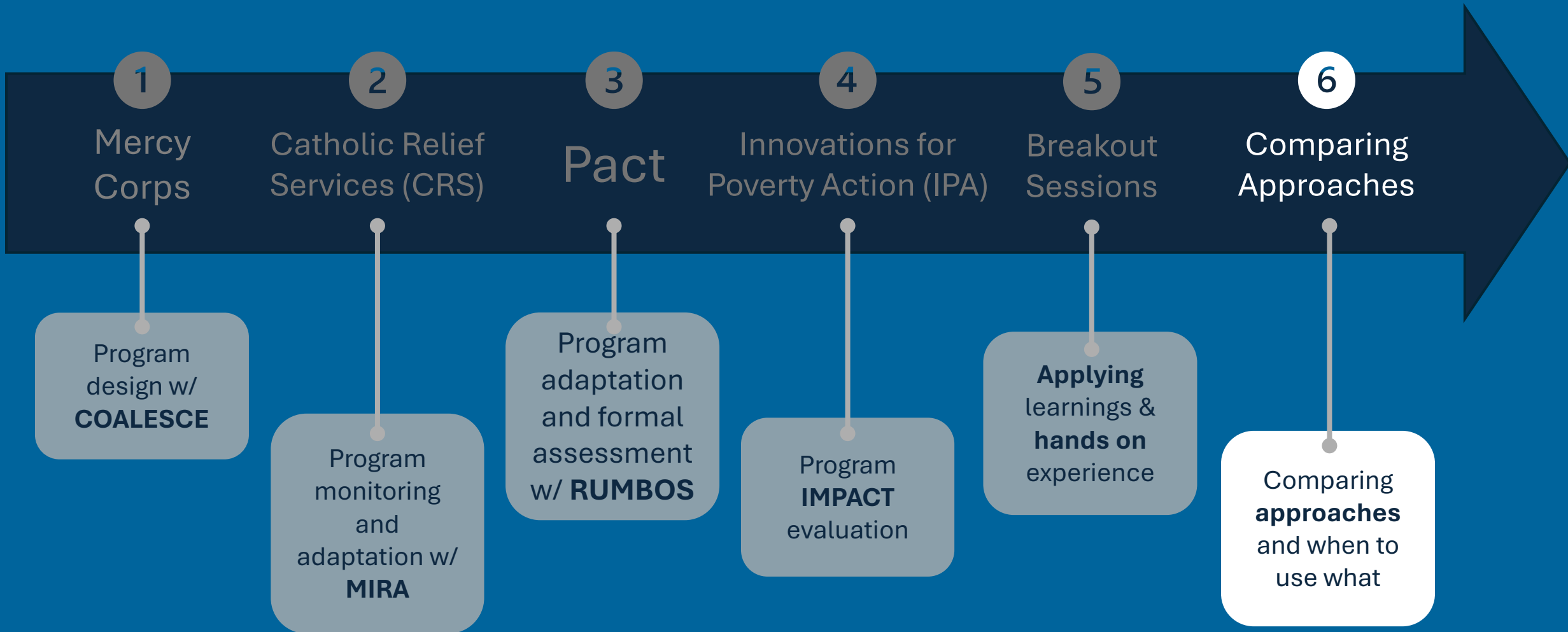
- We will now separate into **breakout sessions** led by one of the 4 presenters
- These sessions aim to help you **apply the knowledge** you have learned and come away with **hands on experience!**



Breakout Session Summaries



Agenda



Comparing Approaches

Understanding Social Cohesion

1. *Similar definitions* of Social Cohesion
2. But, each organization *operationalized the concept differently* for practical application in programming
3. Each organization embraced the *complexity* of the concept while making it *operationally useful* to improve impact

Using the Different Approaches

1. Each approach targets different phases of the project lifecycle: design, implementation, adaptative management, assessment, and evaluation
2. These are not mutually exclusive phases: design contributes to evaluation, and vice versa. Adapt approaches to your needs!
3. Underlying concepts and indicators are useful across all phases.

September
10-12,
2024

PeaceCon
2024



Washington,
DC, USA

Status Quo No More
Building Peace in the Time of
Rising Violent Conflict

#PeaceCon2024 #StatusQuoNoMore

THANK YOU!

*Please **contact us** with further questions:*

Pact

Lina Jaramillo
<ljaramillo@pactworld.org>

Catholic Relief Services

Kimball, Bridget
<bridget.kimball@crs.org>

Mercy Corps

Ted Holmquist
<cholmquist@mercy Corps.org>

Innovations for Poverty Action

Ricardo Morel
<rmorel@poverty-action.org>